

01 co: >>LOOKS AT THE PAIR TO HIS RIGHT (fig1)->EWALKS TOWARDS THE CENTER OF THE TATAMI--

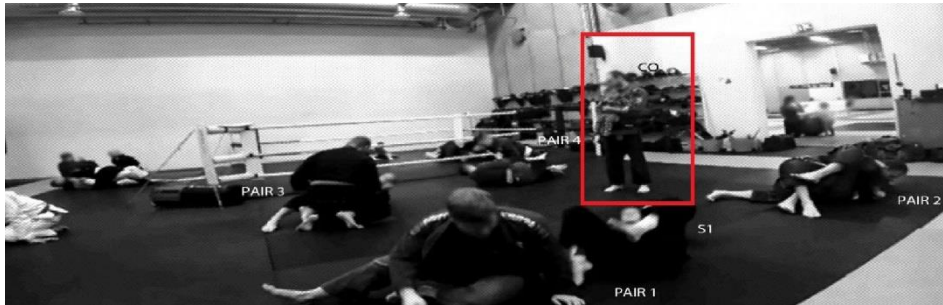


fig1

02 CO: **OKAY.** (fig2)



fig2

03 (3.2)€ (0.8)* (3.0)

04 co: ---->ESTOPS IN THE CENTER, TURNS TO S1 AND HANDS HER HIS DAUGHTER (fig3)----

05 s2: *STANDS UP AND WALKS TO THE CENTER OF THE TATAMI-----



fig3

06 CO: **thanks ().**

07 (1.4)€ (1.5)* (0.4)

08 co: ---->e

09 s2: ----->*

10 CO: **okay€ (.) so uhh:**

11 co: EWALKS TO THE EDGE OF THE TATAMI TO TAKE OFF HIS GLASSES --- (fig4)

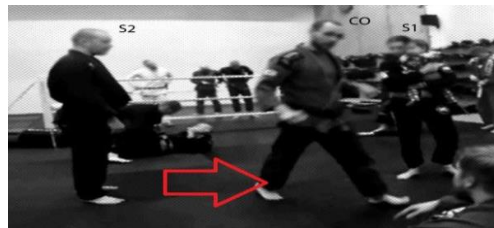


fig4

12 (2.8)€ (1.2)

13 co: ---->EWALKS BACK----

14 CO: **let's* continue the: (.) €with the next side so.**

15 s2: *LIES DOWN ON HIS BACK-----

16 co: ----->EGETS DOWN ON HIS KNEES--

17 (0.5)€ (0.2)€ (0.3)€(1.0) * (1.0)

18 co: ---->e eGESTURES TO S2 (fig5)-->e



fig5

19 s2: ----->*TURNS TO HIS SIDE-->>

20 CO: so (fig6) I am here (.) about to (scoop) (his) head.



fig6